

Thank you for your comment

The comment tracking number that has been assigned to your comment is GLMRIS50265.

Comment Date: March 9, 2011 14:58:06PM

GLMRIS

Comment ID: GLMRIS50265

First Name: [Withheld by requestor]

Middle Initial:

Last Name: [Withheld by requestor]

Organization:

Address: [Withheld by requestor]

Address 2:

Address 3:

City: [Withheld by requestor]

State: [Withheld by requestor]

Zip: [Withheld by requestor]

Country: [Withheld by requestor]

Privacy Preference: Withhold my personal information from the website and NEPA documents

Attachment: FEB 2011 Michigan Sea Grant Study.pdf

Comment Submitted:

I am writing to urge you to please conduct the GLMRIS study as expeditiously as possible. The Great Lakes are not only one of the world's most precious natural resources but they are also extremely important to the livelihoods of more than 1.5 million people. The attached study out of the University of Michigan shows \$62 billion in wages are directly tied to Great Lakes. The fate of the Great Lakes is in our hands. Man has inadvertently threatened the Great Lakes in the past with pollutants and other invasives but the damage that the Asian Carp would do is irreversible. It is critical that we do whatever it takes asap. Please don't let another year go by without a fix. We send men to the moon... we can certainly prevent this pending disaster which we brought on ourselves! Please don't delay. Thank you,

UNIVERSITY OF MICHIGAN NEWS SERVICE

CALL: (734) 764-7260

RELEASES

EXPERTS

NOTICIAS EN ESPAÑOL

photo services

news staff

BROADCAST

U-M IN THE NEWS

RESEARCH NEWS

VP COMMUNICATIONS

Marketing & Design

Tips for faculty

Publications

UNIVERSITY RECORD

RECORD UPDATE

MICHIGAN TODAY

Social Networks

FACEBOOK

TWITTER

YOUTUBE

MOST EMAILED

SUBSCRIBE TO EMAIL

and
RSS FEEDS



CURRENT | ARCHIVES



Print



Share

Search releases



• [advanced search >](#)

• [search tips >](#)

Videos



Clean water
for a
thirsty world



Podcasts



Expanding
solar
power



Slideshows



Students
put social
work into
action



U-M Books



Self
Defense:
Steps to
Survival



Quicklinks

Maps

Key issues

U-M Events

Health System

Athletics News

Flint

Dearborn

Feb. 24, 2011

Study: More than 1.5 million jobs, \$62 billion in wages directly tied to Great Lakes

Español

ANN ARBOR, Mich.—More than 1.5 million U.S. jobs are directly connected to the Great Lakes, generating \$62 billion in wages annually, according to a new analysis by Michigan Sea Grant at the University of Michigan.

The analysis, released today, is based on 2009 employment data from the U.S. Bureau of Labor Statistics and represents a conservative estimate of direct employment related to the Great Lakes in several industries, according to the authors, Michigan Sea Grant's assistant director, Jennifer Read, and research specialist Lynn Vaccaro.



Photos courtesy Michigan Sea Grant

[Click image for higher resolution image](#)



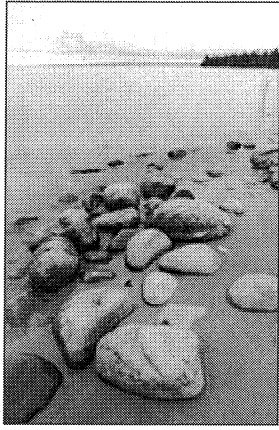
"Many people don't realize how large an impact the Great Lakes have across many large sectors of this region's economy," Read

said. "The total number of jobs and the percentage of jobs by industry illustrate just how critical the Great Lakes are to the region. For example, there are more than 525,000 Great Lakes-related jobs in Michigan alone."

A collaborative effort of U-M and Michigan State University, Michigan Sea Grant is part of the NOAA-National Sea Grant network of more than 30 university-based programs.

The two-page economic analysis updates a more extensive Michigan Sea Grant report issued in 2009. That report focused on Michigan's economic ties to the lakes. The update provides figures for all eight states that border the Great Lakes.

412 MAYNARD STREET
ANN ARBOR, MI
48109-1399
PHONE: (734)764-7260
FAX: (734) 764-7084



Photos courtesy Michigan Sea Grant

[Click image for higher resolution image](#)

The new report looks at the number of jobs connected to the Great Lakes by state and by industry. According to the report, Michigan has the highest number of jobs that depend on the lakes (525,886), followed by Illinois (380,786), Ohio (178,621), Wisconsin (173,969), New York (157,547), Indiana (54,397), Pennsylvania (25,479) and Minnesota (11,877).

Manufacturing was responsible for 66 percent of the Great Lakes-linked jobs, followed by tourism and recreation (14 percent), shipping (8 percent), agriculture (8 percent), science and engineering (2 percent), utilities (1 percent) and mining (1 percent).

Great Lakes vessels transport an average of 163 million tons of cargo each year. Lake vessels can ship goods three times more efficiently than rail and 10 times more efficiently than trucks. This transportation system sustains manufacturing and steel production, while the clean, abundant Great Lakes waters attract chemical and pharmaceutical companies to the region.

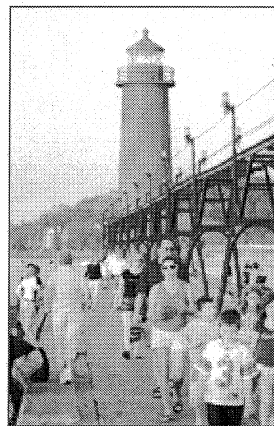
Historically, access to the lakes resulted in a concentration of technical skill, transportation and manufacturing infrastructure. In the coming decades, growth will be less linked to traditional manufacturing and more focused on quality of life and quality of the region's natural resources.

"The quality of our lives in Michigan, and the region, is largely defined by the Great Lakes. They provide us sustenance, livelihoods, recreation and a sense of place," said Jim Diana, director of Michigan Sea Grant and a professor at the U-M School of Natural Resources and Environment.

"Unless we continue to protect them and do even more to restore them, we will lose the ability to attract and retain new businesses and talented workers," Diana said. "Restoration of the lakes is crucial to our future."

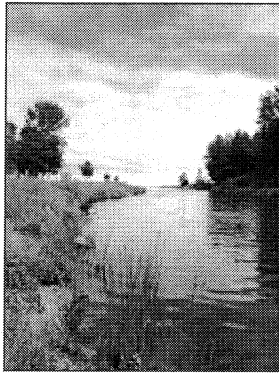
Great Lakes beaches, resort communities and natural areas support a vibrant recreation and tourism industry and enhance the quality of life for residents. More than 4 million recreational vessels are registered in the region, and people spend nearly \$16 billion annually on boating trips and equipment.

Many take advantage of the region's Great Lakes-dependent natural resources, including more than 9.2 million anglers, 4.6 million hunters and 23.2 million bird watchers each year.



Photos courtesy Michigan Sea Grant

[Click image for higher resolution image](#)



Photos courtesy Michigan Sea Grant

Click image for higher resolution image

The calculations in the Michigan Sea Grant economic summary are based on the most recent annual estimates for county employment from the U.S. Bureau of Labor Statistics' Quarterly Census of Employment and Wages and its Occupational Employment Statistics program.

Michigan Sea Grant helps foster economic growth and protects Michigan's coastal/Great Lakes resources through education, research and outreach. Support for the production of the economic report was provided through the Graham Environmental Sustainability Institute at the University of Michigan.

U-M Sustainability fosters a more sustainable world through collaborations across campus and beyond aimed at educating students, generating new knowledge, and minimizing our environmental footprint. Learn more at **sustainability.umich.edu**

Related Links:

Read the Michigan Sea Grant report

Contact: Jim Erickson

Phone: (734) 647-1842

Related Categories: Environment

Related Keywords: Great lakes, sustainability, environment, jobs