

GLMRIS

GREAT LAKES AND MISSISSIPPI RIVER INTERBASIN STUDY



AQUATIC NUISANCE SPECIES



ECOSYSTEMS



NAVIGATION



RECREATION



FLOOD RISK MANAGEMENT

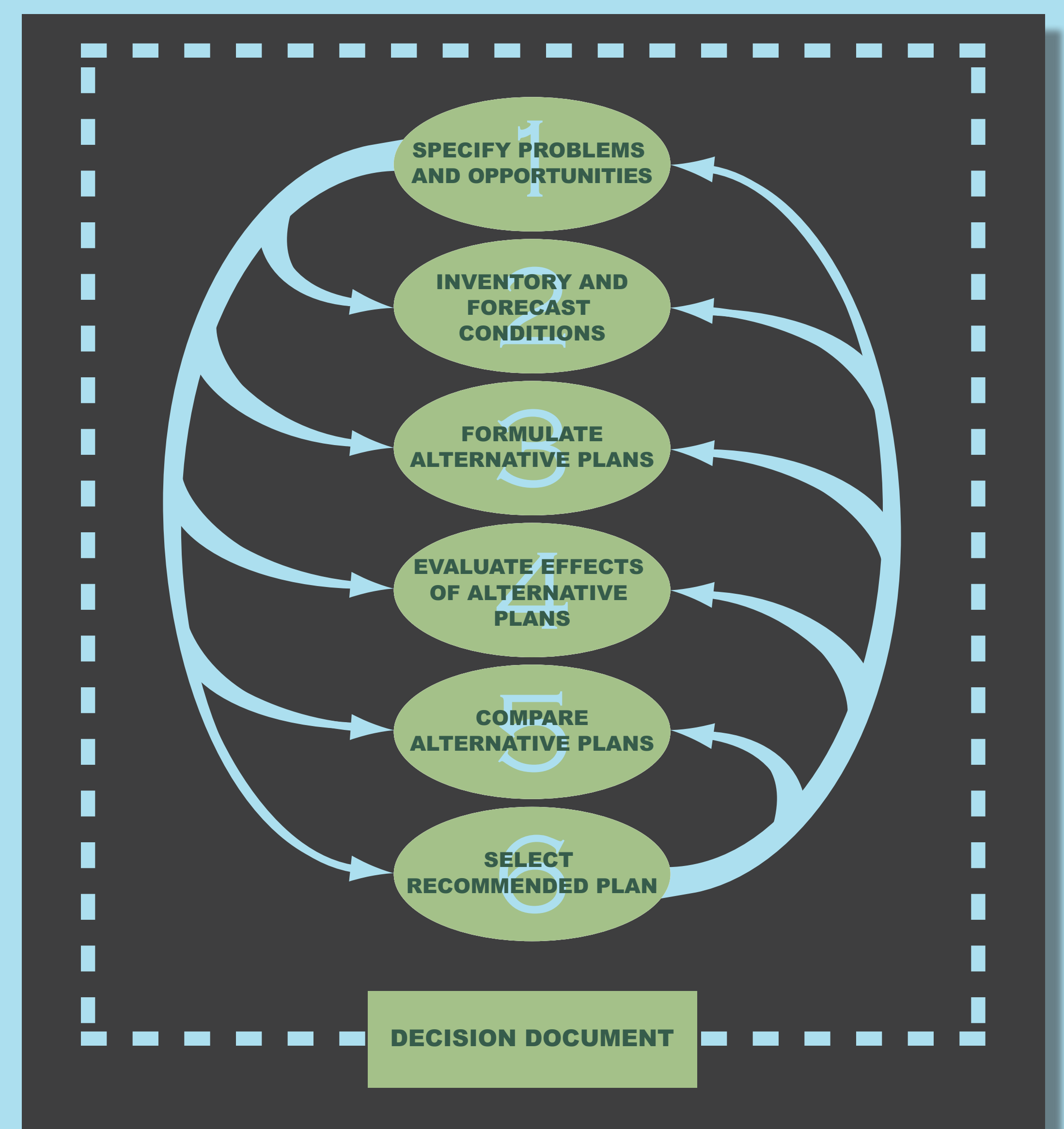


WATER USE

PLANNING PROCESS

Principles and Guidelines

GLMRIS follows the U.S. Army Corps of Engineers Civil Works Planning Process - a six-step iterative process defined in the *Economic and Environmental Principles and Guidelines for Water and Related Land Resources Implementation Studies*, U.S. Water Resources Council, 1983. The U.S. Army Corps of Engineers planning process is a structured approach to problem-solving and provides a rational framework for sound decision-making.



Multi-purpose Evaluation Process

The U.S. Army Corps of Engineers will evaluate the benefits, costs, and impacts of alternative plans. Evaluation of alternative plans will utilize economic, environmental, and social metrics.

Revisions to Principles and Guidelines

Principles and Guidelines may be revised during this study based on direction from the Water Resource Development Act of 2007, Section 2031. Therefore, the U.S. Army Corps of Engineers planning policy and guidelines may change during the course of the study.

NEPA Process

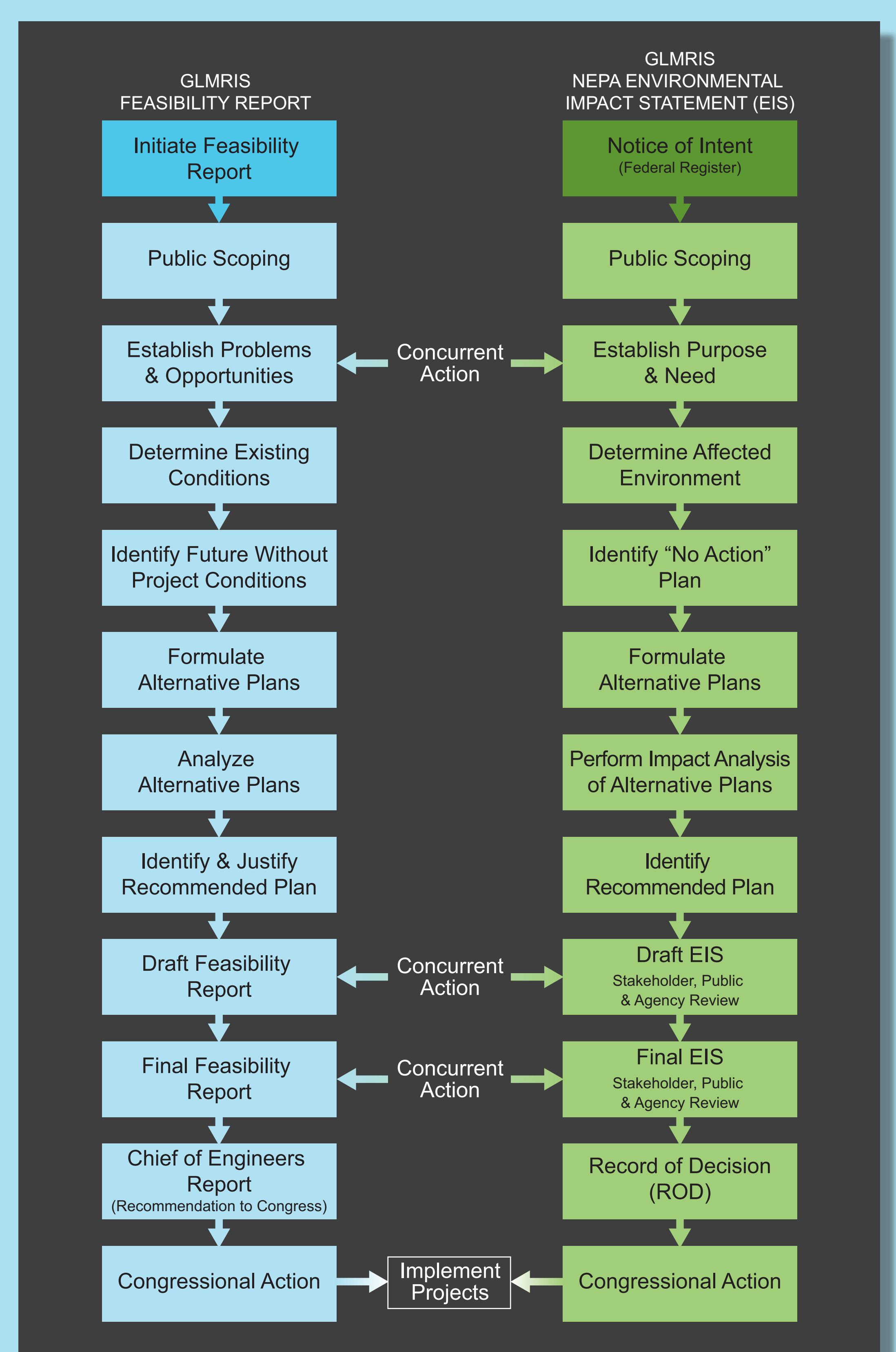
The National Environmental Policy Act (NEPA) requires federal agencies to:

- Inventory environmental resources; and
- Evaluate and compare project alternatives to determine the impacts to significant natural resources.

GLMRIS will integrate the NEPA process with the USACE six-step planning process.

Public Involvement Opportunities

Public involvement is an integral and essential part of the GLMRIS process. Throughout the study, the U.S. Army Corps of Engineers will use a variety of communication tools to ensure interested parties are kept informed of GLMRIS activities. The public will have formal opportunities to provide their input during NEPA scoping and the draft Environmental Impact Statement review.



US Army Corps of Engineers®